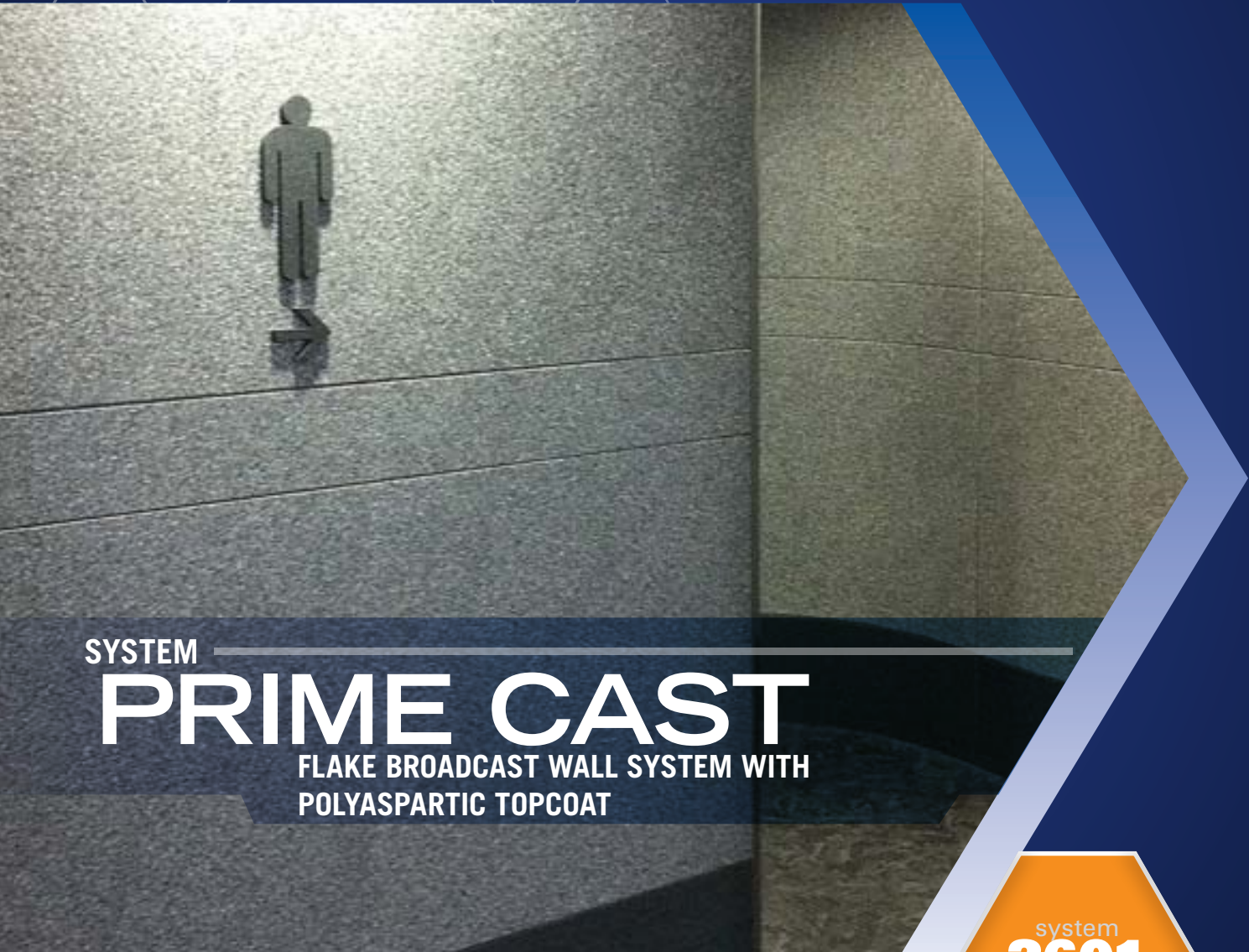


Prime Coat
COATING SYSTEMS™



SYSTEM

PRIME CAST

FLAKE BROADCAST WALL SYSTEM WITH
POLYASPARTIC TOPCOAT

system
2601

PRIME CAST 2601 is a 1/16" thick decorative flake wall coating system with a polyaspartic topcoat. Formulated for concrete, block, gypsum wall board, and many other standard building materials, 2601 offers an industrial strength multi-speckled finish system available in three sizes. The finish is not only industrial strength but is a decorative alternative to solid-colored wall coatings.

COMMON APPLICATIONS

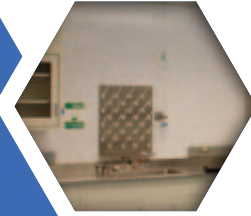
2601 is installed over most wall substrates. Specific applications include, but are not limited to: healthcare and hospitals, school hallways and locker rooms, institutional and correctional corridors, vivariums, and clean rooms.

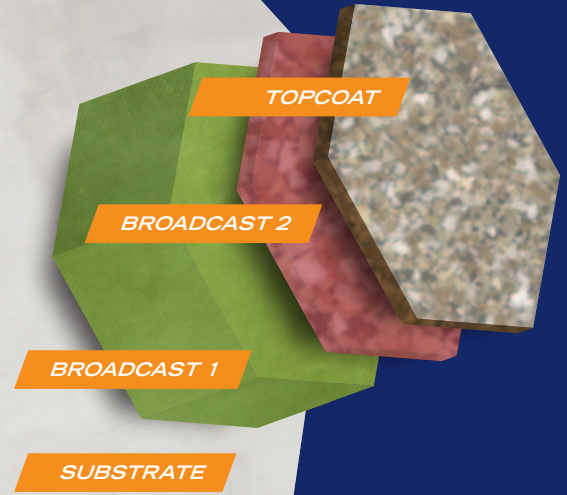
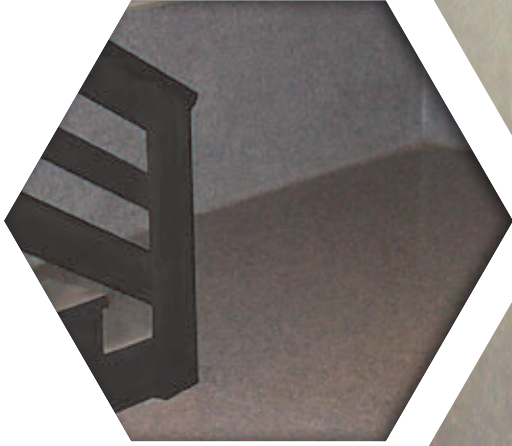
COMPONENTS

100 / 339 / 327 / 500

LEED MATRIX [NC 2009]

	YES	NO
MRc1.1 Building Reuse	✓	
MRc2 Construction Waste Management	✓	
MRc4.1 Recycled Content		✓
MRc6 Rapidly Renewable Materials	✓	
IEQc4.2 Low Emitting Materials	✓	





OPTIONS

Cove Bases: Not Available

Colors: see back panel

	A	B	C
Texture	✓	✓	

Prime Coat offers 3 categories of finish Textures. Texture A is our smoothest finish. Texture B is our mid-level slip resistant finish and Texture C is our highest level slip resistant finish. Custom textures can be engineered to meet specific design requirements. A mock up is recommended as the best way to ensure customer satisfaction.

Antimicrobial: Available

Waterproofing Membrane: Not Available

Topcoats:

511/512

Waterborne urethane in gloss, satin and matte, very good gloss retention, good chemical and abrasion resistance, LEED compliant

SYSTEM
2601

COLORS

For additional or custom system configurations, please contact your Prime Coat Consultant or call us at **877-362-5111**.



PRIME COAT COATING SYSTEMS
405 N Oakwood Ave | Waukegan IL 60085
(847) 362-5111 | primecoat.com

2601-02/13



In the unlikely event of a problem, a resolution is one phone call away with the assurance that the blame game will not be a part of the process. Our goal is to develop long lasting relationships with our customers.

WE PLEDGE TO DO WHATEVER WE CAN TO BRING OUR CUSTOMERS THE HIGHEST LEVEL OF SATISFACTION!